

# IROAD™



# IROAD QX2

QHD / FHD 2-CHANNEL DASH CAMERA



2CH  
FRONT & REAR



FRONT IMAGE SENSOR  
SONY STARVIS



HIGH DYNAMIC RANGE



HYPER/TIME LAPSE



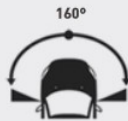
INTELLIGENT  
NIGHT VISION



WIFI CONNECTION  
IROAD APP



BUILT IN GPS



160°  
WIDE ANGLE



ROAD SAFETY  
WARNING SYSTEM



FRONT - 30FPS  
REAR - 30FPS

# ADAS Advanced Driver Assistance Systems

The IROAD QX series is equipped with the Road Safety Warning System that provides audio and visual alerts for Lane Departure (LDWS), Front Collision (FCWS) and Front Vehicle Departure (FVDW). It detects road markings and gives voice warnings to the drivers if the vehicle begins to stray from its lane or when it is at risk of an imminent crash.



**LDWS**  
Lane Departure Warning System



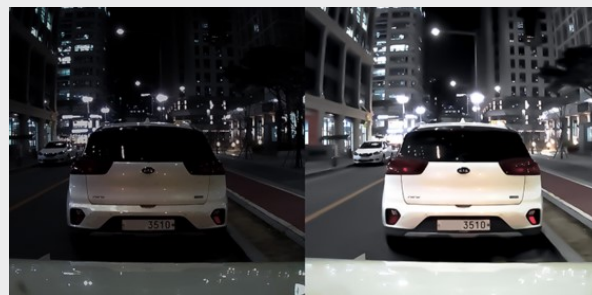
**FCWS**  
Forward Collision Warning System



**FVDW**  
Front Vehicle Departure Warning

# X-VISION NIGHT VISION Nighttime Picture Quality Correction

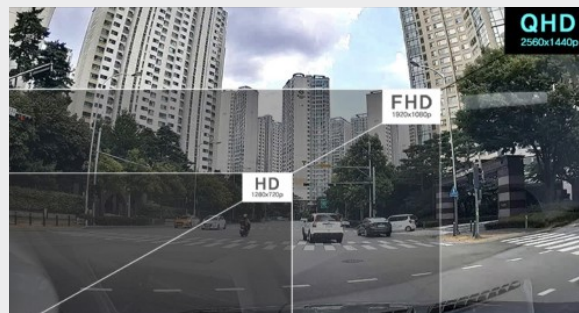
Videos recorded by a dash cam in a low light environment such as a dark alleyway or underground parking lot can pose difficulties when you try to accurately identify information from the image. IROAD X-VISION employs the new ISP (Image Signal Processing) technology and the real-time image processing function to give brighter images when recorded under nighttime parking mode.



# QHD RECORDING

## HIGH-QUALITY FOOTAGE

By applying the Sony Stavis sensor to both the front and rear cameras of the IROAD QX2, the image quality is significantly enhanced, particularly during nighttime recording. The sensor delivers clearer and more vivid colors in QHD images, ensuring superior image quality in low-light conditions. It's worth noting that the front camera records in QHD, while the rear camera records in FHD, providing you with clear and detailed footage from both angles.



# WI-FI CONNECTION AND IROAD APP



The QX2's built-in Wi-Fi can conveniently connect automatically to the mobile app upon opening, making it simple to pair the unit with your device to review or extract footage from the camera.

Manage all settings such as ADAS, resolution, sensor, time, sound, cut off voltage and more through the app.

What's more, the latest version of the firmware is regularly updated through the server once connected.